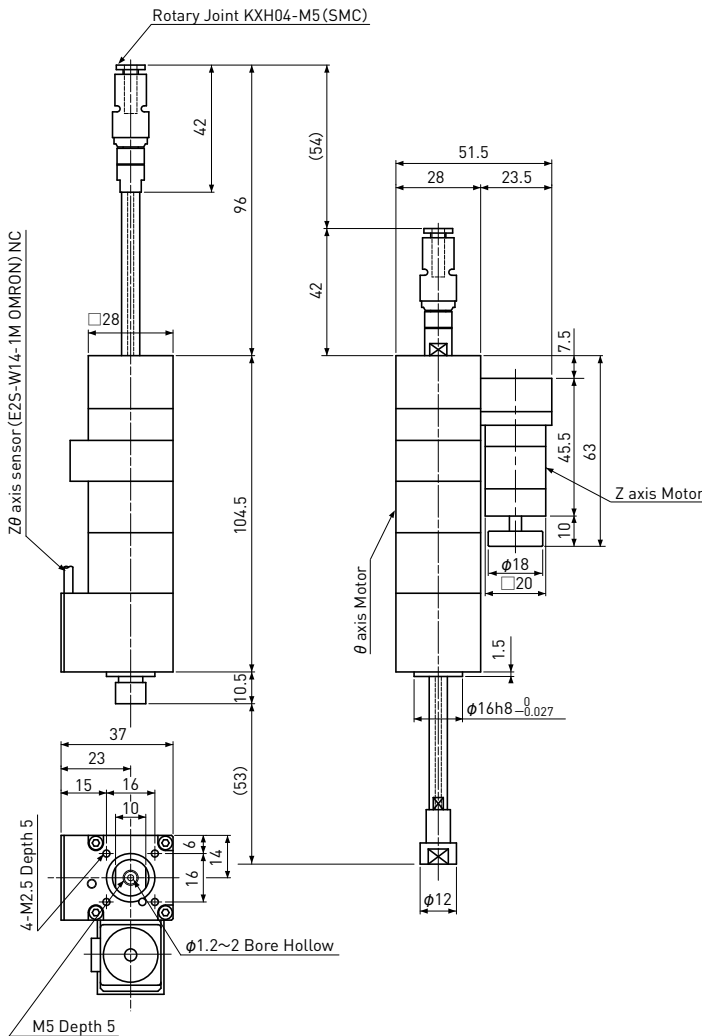


DDA VZ 28-G 10 050 HB N

□20/28 2-phase Stepping Motor
Lead 10mm Travel 50mm



Parts List	
Motor	Z □20 Stepping Motor 0.5A/phase
	θ □28 Hollow Stepping Motor 0.67A/phase
Drive Screw	Ball Screw φ6 (Lead 10mm)
Sliding Guide	Ball Spline φ6mm
Sensor (Linear, Rotary)	Proximity Sensor E2S-W14-1M(OMRON)

Z-axis Motor

A	Black
Ā	Green
B	Red
B̄	Blue

UL3265,AWG26 (310mm)

θ-axis Motor

A	Black
Ā	Green
B	Red
B̄	Blue

UL1061,AWG24 (310mm)

Sensor (Z, θ-axis)

+12~24V	Brown
LS	Black
GND	Blue

1000mm

● Specifications

※The numbers in table below are reference. Detail dimensions will be provided by drawing.

Items	Z Axis	θ Axis
Movable Range	50mm	± 360°
Repeatability	±0.020mm	±0.03°
Resolution	25 μm (Full Step)	1.8° (Full Step)
Maximum Speed	200mm / sec	1080° / sec
Acceleration & Deceleration time	Min. 0.2sec	Min. 0.04sec
Reference Thrust Force	5N	—
Maximun Permissible Moment	—	0.15 × 10 ⁻⁴ kg·m ² (※)
Reduction ratio	1/2	—
Mass	410g	
Operating Temperature	0~40°C (No Condensation)	

Dia.	Reference of Moment of Inertia	
	Aluminum	Steel
φ 20mm	340mm (300g)	120mm (300g)
φ 30mm	65mm (130g)	25mm (130g)
φ 40mm	20mm (75g)	7.5mm (75g)

Precautions

- 1) The Z-axis does not have brake device. Please be careful when the power supply is switched off in case of Z-axis may free-fall.
- 2) Reference of Moment of Inertia table shows the theoretical values. KSS recommends that you should apply actual moment to the machine and confirm the safety operation before use.

※ For the Maximum Permissible Moment, see "Reference of Moment of Inertia" table above.